

ARO Plank 3

Leather Wall System



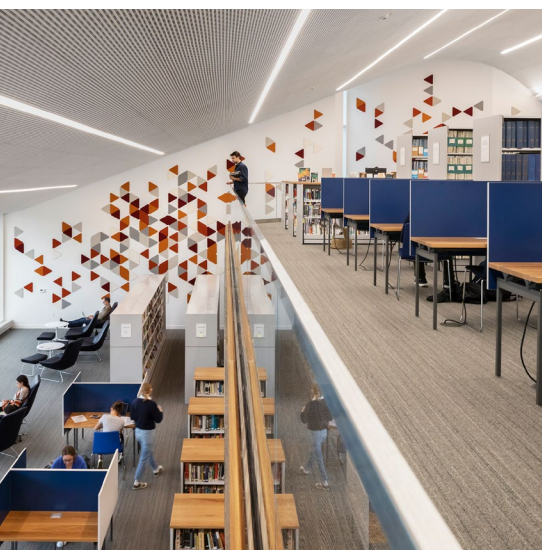
spinneybeck



ARO Plank 3 puts a new slant on acoustics.

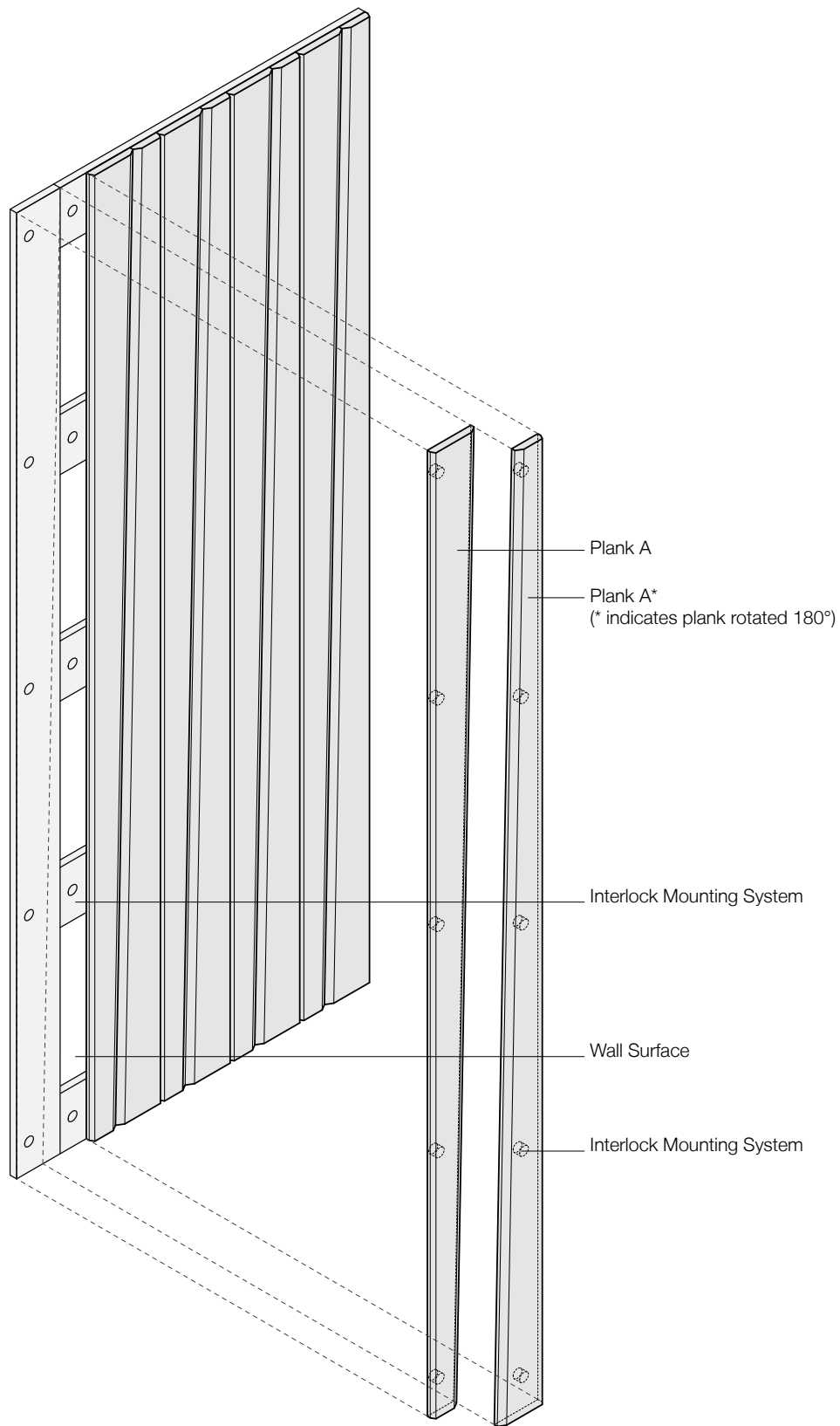
ARO Plank is a wall system composed of modular planks that assemble to create standard patterns, yielding a continuous architectural finish. ARO Plank 3 has one faceted module which is rotated and repeated. Planks install quickly and easily with Spinneybeck's Interlock Mounting System and are available in wide range of leather qualities and colors.

ARO Plank was designed by Architecture Research Office (ARO), a firm dedicated to architecture that unites beauty and form with strategy and intelligence.

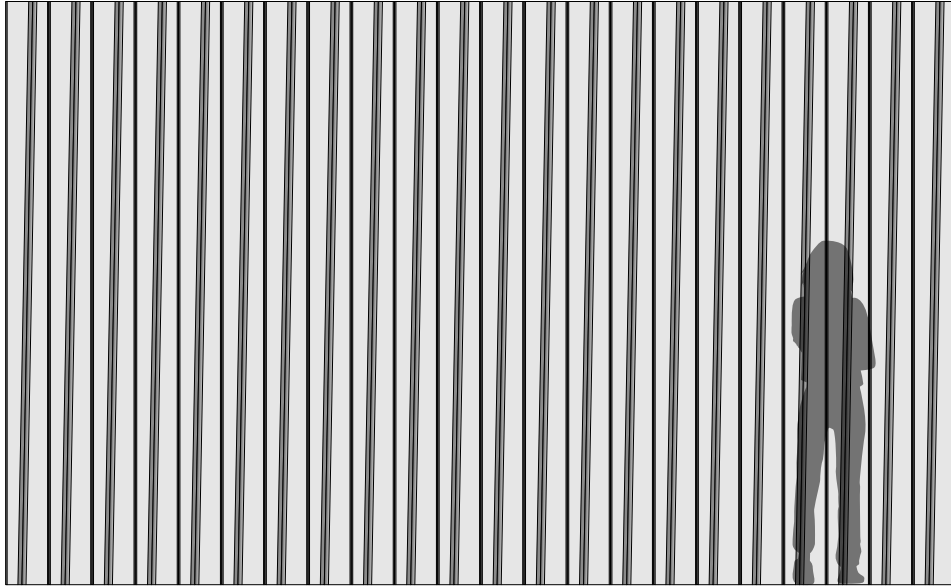


“We strive to convey a sense of calm, warmth, and joy in our product designs as well as through the architecture we design. We take inspiration from both material expression and functionality. We work to elevate spaces through careful attention to detail and use, and to emphasize the responsible use of materials and seek to balance beauty and strategy through design, pattern and texture.”

– Architecture Research Office, designers of ARO Plank 3



Exploded Axonometric



A A* A A* A A* A A* A A* A A* A A* A A* A A* A A* A A* A A* A A* A A* A A* A A* A A* A A* A A*

ARO Plank 3.1

Repeat: AA* | Repeat Width: 8 in (20.3 cm)

* Indicates module is rotated 180°

The standard installation may be configured with any combination of Spinneybeck colors

Product	ARO Plank 3
Designer	Architecture Research Office
Content	European cowhide + Akustika 10 substrate (60% post-consumer recycled content)
Plank Width	Top: 5 in (12.7 cm) Bottom: 3 in (7.6 cm)
Thickness	1 1/2 in (38.2 mm) (includes Interlock Mounting System strapping)
Standard Pattern	ARO Plank 3.1: AA* (* indicates plank rotated 180°)
Pattern Repeat Width	8 in (20.3 cm)
Max. Standard Plank Length	9'-0" (2.74 m)
Seam Options	Top Stitch or Blind Stitch—Seams are machine stitched at random intervals in matching thread color unless otherwise specified
Custom	Alternative patterns, FilzFelt© felts, plank lengths beyond 9'-0" (2.74 m), orientations other than vertical, ceiling-mounted, finished plank ends, finished Interlock Mounting System strapping, and cut-outs are available and must be quoted—details available upon request
Durability	Contract or residential
Lead Time	Made to order and certain lead times will apply
Installation	Planks install with Interlock Mounting System provided (wall fasteners not included)
Maintenance	For finished leathers, wipe with a cool, damp cloth. For tougher soiling, use a pH-balanced soap such as Dawn with a 1:10 ratio of soap to water and rinse. Repeat, if needed. Occasional use of Spinneybeck Finished Leather Cleaner, Conditioner & Protector is recommended. For naked (aniline) leathers, wipe entire surface with a soft cloth and cool water to even out any abrasions or stains. Do not spot rub, for it will darken only that area. Occasional use of Spinneybeck Aniline Leather Cleaner, Conditioner & Protector is recommended. Other leather cleaners such as saddle soap or household cleaners that may contain harsh chemicals, alcohol or ink removers should never be used.
Variation	Color variation of naked leathers may be more pronounced beyond the normal commercial range. A Cutting for Approval (CFA) is required for all orders.
Standard Leathers	Available in full color range of each leather below—refer to Color Book or spinneybeck.com/colorbook for complete color selection. (Swatches shown to indicate grain texture only.)

