



Flat Wrap

Handrail



Flat Wrap Handrail at United Talent Agency

Flat Wrap Handrail elevates an overlooked rail.

Leather handrails elevate an overlooked rail to a tactile, distinctive feature. This elegant and durable solution for stairs or elevator and door hardware enhances a space with a handcrafted, bespoke architectural element. Originating in Europe, the craft of wrapping handrails in leather is an art form. The leather is cut, shaved, and wrapped by hand adhering the leather to the handrail substrate. To create a polished, seamless aesthetic, the handrail is stitched on the underside providing a subtle handmade detail and tactile surprise beneath. Customizable options include substrate material and diameter, leather type, stitching style, thread color, and leather or stainless steel end caps.

Stitching Styles

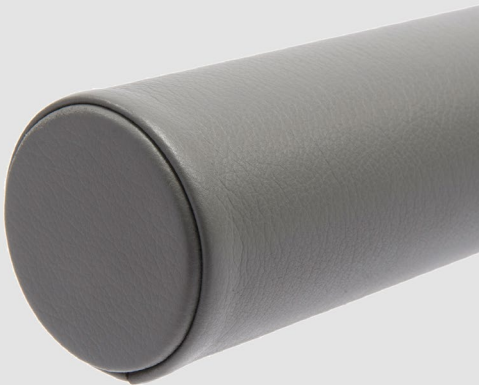


Baseball Stitch



Pinch Stitch

End Cap Options

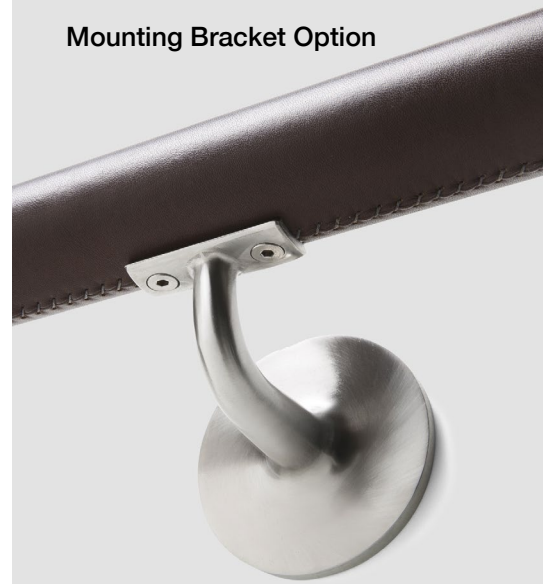


Leather



Stainless Steel

Mounting Bracket Option

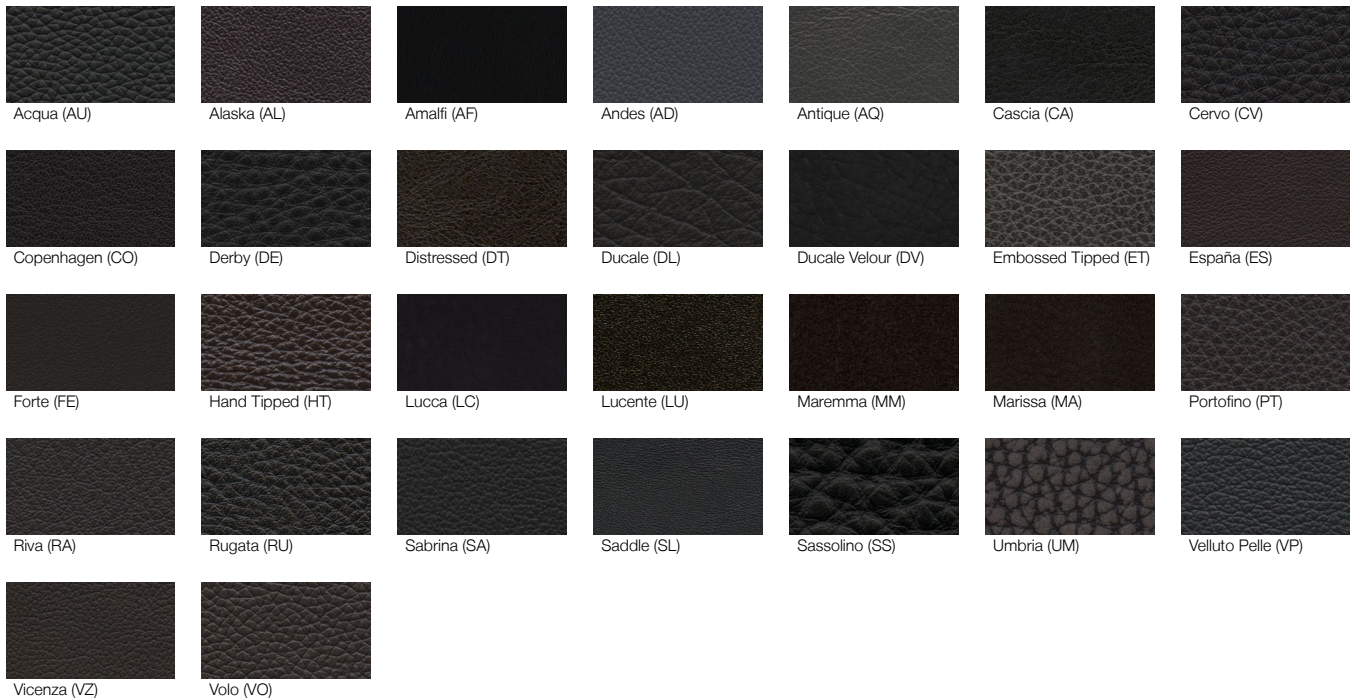


Stainless Steel

Product	Flat Wrap Handrail
Covering Content	European cowhide + Nylon thread
Substrate Options	1 3/4 in (4.5 cm) dia. Aluminum 1 1/4 in (3.2 cm) dia. Stainless steel 1 3/4 in (4.5 cm) dia. Stainless steel
Stitching Options	Baseball or Pinch
End Cap Options	Leather or Stainless steel
Mounting Bracket Option	Stainless steel
Length	Standard pricing applies to straight handrails of 10 lin ft (3 lin m) or more. Shorter lengths and any bends or curves must be quoted.
Maintenance	For finished leathers, wipe with a cool, damp cloth. For tougher soiling, use a pH-balanced soap such as Dawn with a 1:10 ratio of soap to water and rinse. Repeat, if needed. Occasional use of Spinneybeck Finished Leather Cleaner, Conditioner & Protector is recommended. For naked (aniline) leathers, wipe entire surface with a soft cloth and cool water to even out any abrasions or stains. Do not spot rub, for it will darken only that area. Occasional use of Spinneybeck Aniline Leather Cleaner, Conditioner & Protector is recommended. Other leather cleaners such as saddle soap or household cleaners that may contain harsh chemicals, alcohol or ink removers should never be used.
Lead Time	Made to order and certain lead times will apply
Installation	Handrails should be fabricated off-site by an experienced metal fabricator or fabricated and manufactured by Spinneybeck. Installation services available through Spinneybeck.
Custom	Embossed or perforated leather and curved rails must be quoted

Standard Leathers

Available in the full color range of each leather below – refer to Color Book or spinneybeck.com/color-book for complete color selection. (Swatches shown to indicate grain texture only.)



Standard Thread Colors

