



Leather Weave

Upholstery Leather

spinneybeck



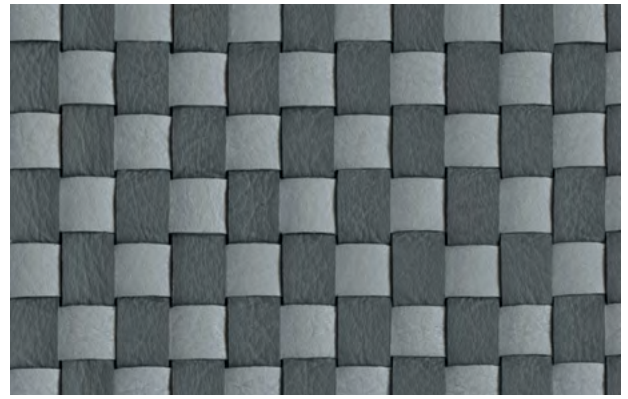
**Leather Weave
brings it
all together.**

Leather Weave takes quality upholstery leather and creates depth and pattern by weaving thin strips together. This unique covering for upholstery and architectural products offers a distinct look with a more efficient use of leather as an entire hide can be used to make the product.

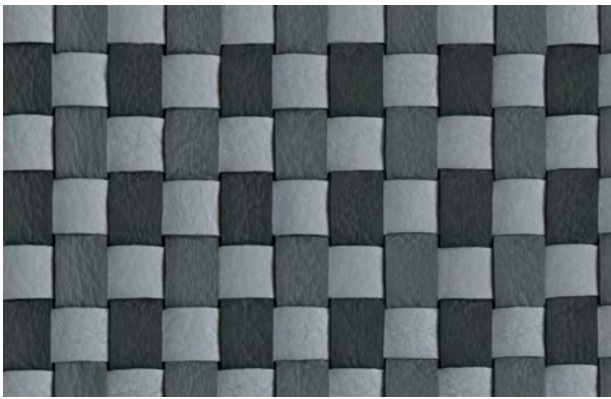
Any Spinneybeck leather may be used to create custom Leather Weave including pearlized, sueded, and four patent leathers. Up to three different leathers styles may be used to create subtle or dramatic patterning. Also choose from 0.2 in (5 mm) or 0.28 in (7 mm) strip width and roll width of 27 in (69 cm), 36 in (91 cm), or 38 in (97 cm).



One Leather in 5mm or 7mm Strip Width



Two Leathers in 5mm or 7mm Strip Width



Three Leathers in 5mm or 7mm Strip Width

Patterns may be configured with any combination of Spinneybeck colors in Leather Weave standard leather qualities

Product	Leather Weave (LW)
Content	European cowhide
Origin	Italy
Pattern Options	One Leather, Two Leather, Three Leather
Strip Width Options	0.2 in (5 mm) or 0.28 in (7 mm)
Roll Width Options	27 in (69 cm), 36 in (91 cm), 38 in (97 cm)
Maximum Length	80 lin ft (24.4 m)
Thickness	Varies by leather
Weight	Varies by leather
Backing	Cotton backing for stability
Minimum	55 sq ft (5.1 sq m) and an overrun of up to 10 percent is required to guarantee no shortage of material
Primary Uses	Upholstery, wall panels
Industry	Automotive, aviation, contract, hospitality, marine, residential
Maintenance	For finished leathers, wipe with a cool, damp cloth. For tougher soiling, use a pH-balanced soap such as Dawn with a 1:10 ratio of soap to water and rinse. Repeat, if needed. Occasional use of Spinneybeck Finished Leather Cleaner, Conditioner & Protector is recommended. For naked (aniline) leathers, wipe entire surface with a soft cloth and cool water to even out any abrasions or stains. Do not spot rub, for it will darken only that area. Occasional use of Spinneybeck Aniline Leather Cleaner, Conditioner & Protector is recommended. Other leather cleaners such as saddle soap or household cleaners that may contain harsh chemicals, alcohol or ink removers should never be used.
Lead Time	Made to order and 6–8 week lead time will apply

Standard Leathers Available in full color range of each leather below—refer to Color Book or spinneybeck.com/colorbook for complete color selection. (Swatches shown to indicate grain texture only.)

